

MONTHLY MEMBERSHIP PROGRESS REPORT

LOCATION NEW YORK

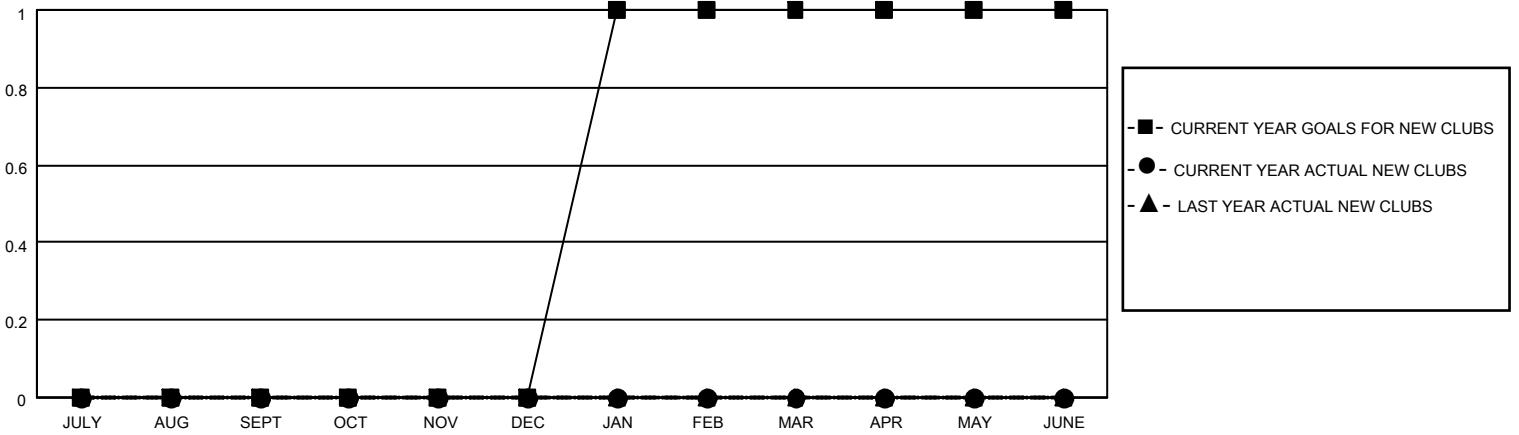
District 20 E2

Results as of: 6/30/2023

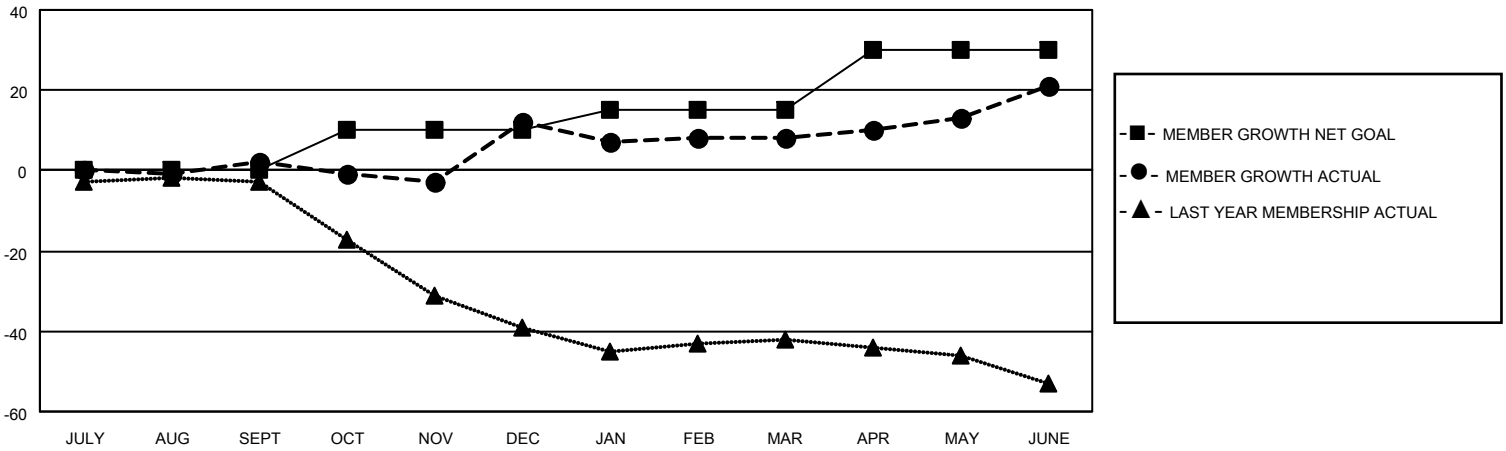
Clubs			
RESULTS FOR 2022-2023			
QUARTER	NEW CLUB GOAL	NEW CLUBS	DROPPED CLUBS
JULY/AUG/SEPT	0	0	0
OCT/NOV/DEC	0	0	0
JAN/FEB/MAR	1	0	0
APR/MAY/JUNE	0	0	0

Members			
RESULTS FOR 2022-2023			
QUARTER	MEMBER GROWTH NET GOAL	MEMBER GROWTH ACTUAL	DROPPED MEMBERS ACTUAL (including transfers)
JULY/AUG/SEPT	0	9	6
OCT/NOV/DEC	10	31	20
JAN/FEB/MAR	5	9	12
APR/MAY/JUNE	15	39	26

GOALS AND ACTUAL NEW CLUBS CUMULATIVE



GOALS AND ACTUAL MEMBERS CUMULATIVE



DROPPED CLUBS: 0

21 CLUBS OF 35 ADDED 1 OR MORE NEW MEMBERS

GENDER DISTRIBUTION

MALE	510 (59.86%)
FEMALE	342 (40.14%)
NON BINARY	0 (0.00%)
PREFER NOT TO ANSWER	0 (0.00%)

DROPPED MEMBERS

[CLICK HERE FOR CUMULATIVE MEMBERSHIP DATA](#)

DECEASED	14
CLUB CANCELLED	0
OTHER	50
TOTAL	64

TOTAL FAMILY UNIT MEMBERS 192

FAMILY MEMBERS PAYING HALF DUES 97